

WELCOME TO MATANGI SCHOOL!

'Developing students committed to personal excellence and pride.'

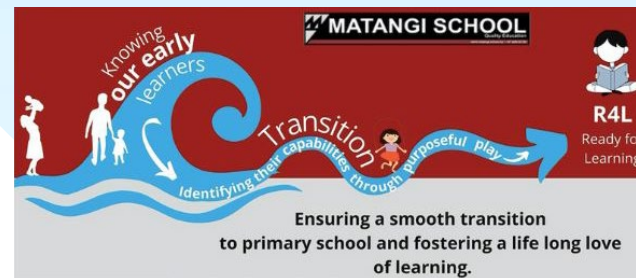
-Since 1910-



CONTINUATION OF LEARNING

The focus for our New Entrant and Year One students at Matangi School is to ensure a smooth transition from ECE to primary school. Our focus is on our children's dispositional learning, independence and social competence.

'Dispositional learning are combinations of children's emerging knowledge, skills and attitudes to learning.'



TRANSITIONAL CAPABILITIES AND CAPACITIES

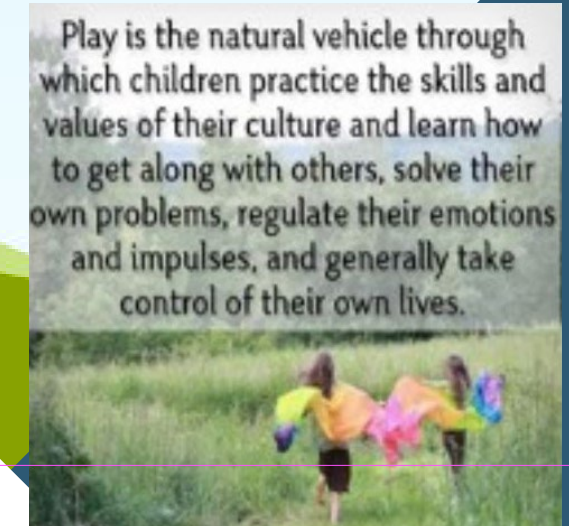
Our programme is based around the capabilities and capacities of our students who are transitioning to school. These are the foundational skills required for each child to be an effective learner. A child's readiness to learn is identified as these skills are consolidated.



Play-based Approach

Within our transitional programme, we provide opportunities for:

- Purposeful play-based learning activities and provocations
- Structured learning with a focus on Literacy, Numeracy and Inquiry-based topics
- Extending our students' strengths and interests in authentic contexts



COME FOR A VISIT

We welcome all children and their families to arrange a visit to Matangi School to see what we have to offer!

- School pool
- Native area & Orchard
- Inviting classrooms
- Junior and senior playgrounds
- Beautiful school grounds
- Country vibe!
- Friendly faces of our students and staff

KICKSTART!

We invite all of our newly enrolled students to join us in our Kowhai classroom so they become familiar with their teachers, their peers and their new surroundings.

For more information, please contact our school office.



TUI VALUES

Our Matangi School Values are embedded in all that we do.

Whanaungatanga - Relationships

Whakaute - Respect

Manawaroa - Resilience

Whai Whakaaro - Reflection

Haepapa – Responsibility



Matangi School

📍 599 Matangi Road, Matangi 3284



www.matangi.school.nz



office@matangi.school.nz

Ph (07) 8295735



Matangi School

TRANSITION TO SCHOOL